

DEADENDS AUTOMATIC OVERHEAD SIDE-OPENING WEDGE ALUMINUM

ALUMINUM
GDW

- Fastest method of deadending ACSR, AAAC, and AAC conductor
- Accepts wide range of conductor sizes. High Strength Aluminum alloy body and jaws
- Requires no wrenches or special tools
- Can be repositioned on conductor during installation
- Rotated clevis eases placement of conductor
- Plated jaws available to accommodate copper conductors

Note: All bolted deadends are rated 40% of RBS - Partial tension per ANSI C119.4"
For conductor sizes not shown in catalog, consult factory
FOR CONDUCTOR SIZES NOT SHOWN IN CATALOG, CONSULT FACTORY

Material: **Body and Jaws** - High Strength Aluminum Alloy
Clevis Pin - Galvanized Steel
Cotter Pin - Stainless Steel

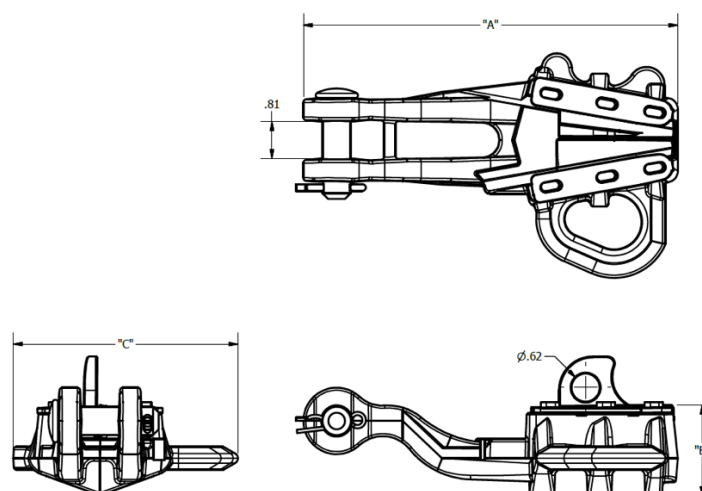


Fig. 1

Product Data

CATALOG NUMBER / CUSTOMER PART NO	CONDUCTOR TYPE	CLAMPING RANGE				U-BOLTS (MM)		ULTIMATE STRENGTH (MM)		DIMENSIONS (MM)		
		CONDUCTOR RANGE		DECIMAL RANGE (MM)								
		MIN	MAX	MIN	MAX	NO.	SIZE	BODY	SAG EYE	A	B	C
GDW2010 <hr/>	AL	#4	2/0	0.23 (5.80)	0.45 (11.40)	-	-	6,000 (26.69)	4,000 (17.79)	7.50 (190.5)	2.00 (50.80)	4.50 (114.3)
	ACSR											
	CU											
GDW2040 <hr/>	AL	#4	4/0	0.23 (5.80)	0.57 (14.50)	-	-	8,000 (35.58)	6,000 (26.69)	8.00 (203.20)	2.00 (50.80)	4.90 (124.46)
	ACSR											
	CU	#4	3/0									